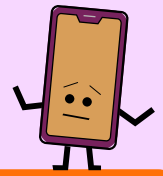


Talking to relatives

A guide to compassionate phone communication during COVID-19



Introduce

SPEAK SLOWLY

OPEN WITH A QUESTION

ESTABLISH WHAT THEY KNOW

#hello my name is...
GRACE
SENIOR CHARGE NURSE

I'm calling to give you an update on your brother, Frank.

Are you OK to talk right now?

Can you tell me what you know about his condition?

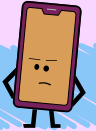
Share info in small chunks



PAUSES
SIMPLE LANGUAGE



EUPHEMISMS
JARGON



Helpful concepts

Honesty with uncertainty

There are treatments that might help Frank get better, such as giving him oxygen to help with his breathing. But if his heart stopped, we wouldn't try to restart it, as this wouldn't work.

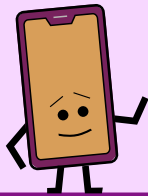
Hope for the best, plan for the worst

We hope Frank improves with these treatments, but we're worried he may not recover.

Sick enough to die

Frank is very sick and his body is getting tired. Unfortunately he's now so unwell that he could die in the next hours to days.

I'm so sorry to tell you this over the phone, but sadly Frank died a few minutes ago.



Comfort and reassure

Is there anything you can tell me about Frank to help us look after him? What matters to him?

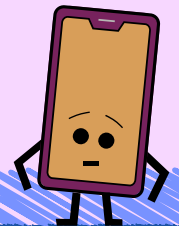
We've been looking after him and making sure he's comfortable.

Allow silence

LISTEN

EMPATHISE

ACKNOWLEDGE



I am so sorry. Please, take your time.

It must be very hard to take this in, especially over the phone.

I can hear how upset you are. This is an awful situation.

Ending the call

DON'T RUSH

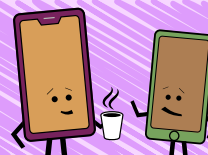
NEXT STEPS

Before I say goodbye, do you have any other questions about Frank?

Do you need any further information or support?

Afterwards

Chat with a colleague.
These conversations are hard.
#weareallhuman



NHS

Chelsea and Westminster Hospital
NHS Foundation Trust

proud
to care



COVID-19 APPROVED GUIDANCE

OFFICIAL SENSITIVE

Note: This guidance has been fast-tracked for approval for use within NHSGGC

Covid-19 Talking to Relatives

This guidance is intended to assist healthcare professionals in the choice of disease-specific treatments.

Clinical judgement should be exercised on the applicability of any guidance, influenced by individual patient characteristics. Clinicians should be mindful of the potential for harmful polypharmacy and increased susceptibility to adverse drug reactions in patients with multiple morbidities or frailty.

If, after discussion with the patient or carer, there are good reasons for not following guidance, it is good practice to record these and communicate them to others involved in the care of the patient.

Version Number:	1
Does this version include changes to clinical advice:	N/A
Date Approved:	15 th April 2020
Approval Group:	Covid-19 Tactical Group

Important Note:

The version of this document on the Clinical Guideline Directory is the only version that is maintained. Any printed copies should therefore be viewed as 'Uncontrolled' and as such, may not necessarily contain the latest updates and amendments.